

SIZE MEASUREMENT CHART FOR SHIRTS*

| MEN - MODERN FIT | | | | | | | | | |
|------------------|--------------------|-------|-------|-------|-------|-------|-------|-------|-------|
| | Standard | S | M | L | XL | 2XL | 3XL | 4XL | 5XL |
| A | Collar | 37/38 | 39/40 | 41/42 | 43/44 | 45/46 | 47/48 | 49/50 | 51/52 |
| B | Chest | 111 | 117 | 123 | 131 | 137 | 147 | 157 | 167 |
| C | Waist | 101 | 107 | 113 | 121 | 127 | 142 | 152 | 162 |
| D | Long sleeve length | 65 | 65 | 67 | 68 | 68 | 68 | 69 | 69 |

| MEN - SLIM FIT | | | | | | |
|----------------|--------------------|-------|-------|-------|-------|-------|
| | Standard | S | M | L | XL | 2XL |
| A | Collar | 37/38 | 39/40 | 41/42 | 43/44 | 45/46 |
| B | Chest | 102 | 108 | 114 | 120 | 126 |
| C | Waist | 91 | 97 | 103 | 109 | 115 |
| D | Long sleeve length | 66 | 66 | 66 | 68 | 68 |

| LADIES - MODERN FIT | | | | | | | | |
|---------------------|--------------------|----|----|-----|-----|-----|-----|-----|
| | Standard | S | M | L | XL | 2XL | 3XL | 4XL |
| B | Chest | 90 | 96 | 102 | 108 | 114 | 120 | 126 |
| C | Waist | 80 | 86 | 92 | 98 | 104 | 110 | 116 |
| D | Long sleeve length | 61 | 62 | 63 | 64 | 65 | 66 | 67 |

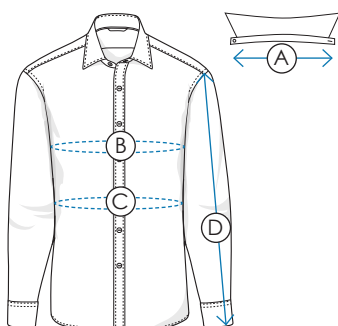
SIZE MEASUREMENT CHART

With the size measurement chart from Seven Seas by ID® you will find the right size straight from the beginning.

The size measurement chart is the essence of standard measuring methods.

All measurements are in centimeters.

The size specifications depend on correct washing and drying of the product.



MEN

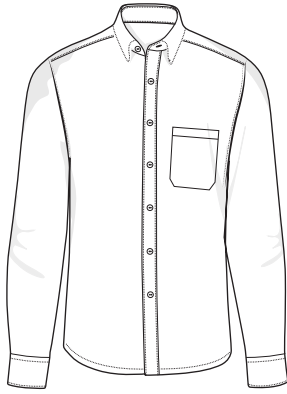
- (A) Collar width is to be measured at the collar from the middle of button to end of buttonhole.
- (B) Chest width is to be measured at the widest point.
- (C) Waist width is to be measured at the slimmest point.
- (D) Long sleeve length is to be measured from shoulder to wrist.

LADIES

- (B) Chest width is to be measured at the widest point.
- (C) Waist width is to be measured at the slimmest point.

* The sizes are instructive and apply to woven shirts

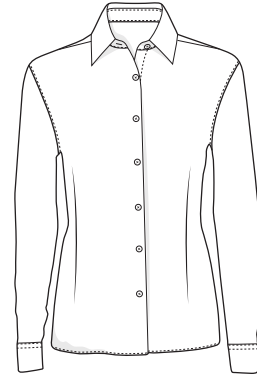
THE SHIRT FIT



MEN'S MODERN FIT

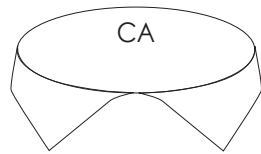


MEN'S SLIM FIT

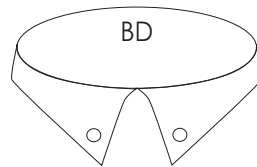


LADIES' MODERN FIT

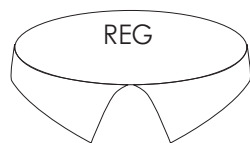
KNOW YOUR COLLAR



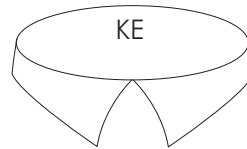
CUT-AWAY COLLAR



BUTTON-DOWN COLLAR



REGULAR COLLAR



KENT COLLAR